

Parcels

Approximate Parcel Boundaries*

Site Boundary

Deep Gulch / Sheridan Creek

Forecasting Lines

Changes to BFE (100-year flood)

Reduced

No Change

Increase

Roads

Paved

Rocked

Native

FEMA Flood Hazard Zones **

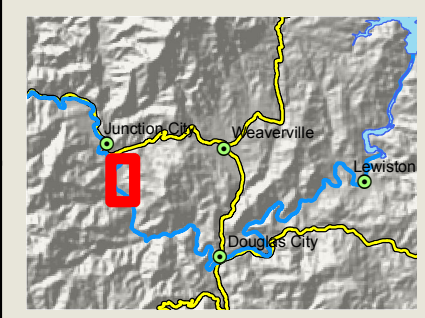
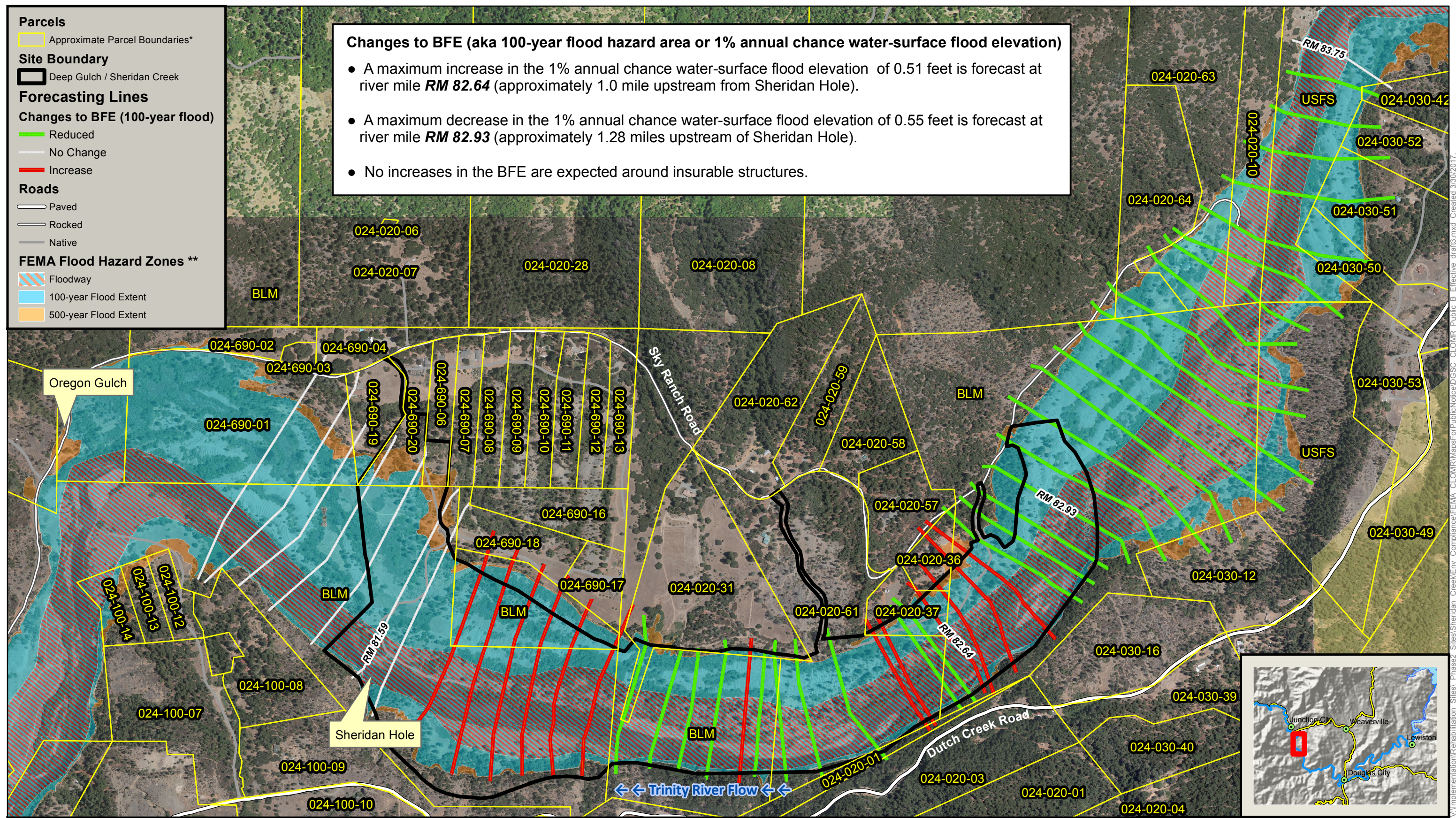
Floodway

100-year Flood Extent

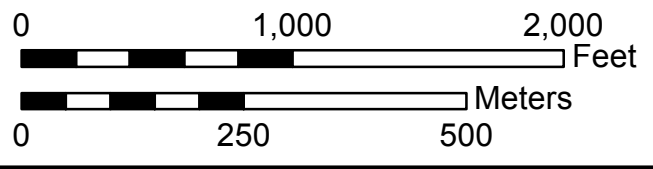
500-year Flood Extent

Changes to BFE (aka 100-year flood hazard area or 1% annual chance water-surface flood elevation)

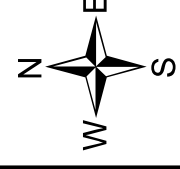
- A maximum increase in the 1% annual chance water-surface flood elevation of 0.51 feet is forecast at river mile **RM 82.64** (approximately 1.0 mile upstream from Sheridan Hole).
- A maximum decrease in the 1% annual chance water-surface flood elevation of 0.55 feet is forecast at river mile **RM 82.93** (approximately 1.28 miles upstream of Sheridan Hole).
- No increases in the BFE are expected around insurable structures.



 **TRINITY RIVER RESTORATION PROGRAM (TRRP)**
 U.S. Department of the Interior, Bureau of Reclamation, Mid-Pacific Region
 P.O. Box 1300, 1313 South Main St.
 Weaverville, CA 96093
 Tel: (530) 623-1800; Fax: (530) 623-5944



1:8,500
 (when printed 11x17)



* Approximate Boundaries are from the Trinity County Resource Conservation District.
 ** Data shown as served by FEMA over internet connection.

Exhibit B.
Deep Gulch and Sheridan Creek
Existing Conditions
FEMA Flood Hazard Zones **
with Forecast Changes

V:\Implementation\Rehabilitation_Sites\Phase2_Sites\Sheridan_Creek\Env_Compliance\FEMA_CLOMR\MapsForPublicNotice\DSSC_CLOMR_Public_B_Effective_draft3.mxd Created 3/30/2017